



REGIONAL PROSPERITY FRAMEWORK

DELIVERY PLAN & PROSPECTUS

2023/24

Edinburgh and South East Scotland Joint Committee



Councillor Cammy Day
Leader, The City of Edinburgh Council



Councillor Norman Hampshire
Leader, East Lothian Council



Councillor David Ross
Leader, Fife Council



Councillor Russell Imrie
Councillor, Midlothian Council
Chair, Joint Committee 2022



Councillor Euan Jardine
Leader, Scottish Borders Council
Chair, Joint Committee 2023



Councillor Lawrence Fitzpatrick
Leader, West Lothian Council
Vice Chair, Joint Committee 2023



Professor Peter Mathieson
Chair, Higher & Further Education Consortium and Principal, University of Edinburgh



Claire Pattullo
Chair of Regional Enterprise Council and Chief Executive Officer at Edinburgh Social Enterprise



Garry Clark
Vice-Chair of Regional Enterprise and Council Development Manager (East of Scotland) at Federation of Small Businesses



Contents

1. Foreword	3
2. Introduction	4
3. Executive Summary	5
A Resilient Regional Economy	
4. Our Diverse Region	7
5. Our Economy and Goals	9
6. Opportunities & Challenges	10
Our Priorities	
7. Our Theory of Change	12
8. Priority Initiatives	13-16
9. Call To Action	
Delivering Together	18
9. Our Ask of Government	19
10. What Will Change?	20
<i>Annex 1: Already Delivering – Case Studies</i>	23

Foreword

The City Region Deal brings together six local authorities, four universities, six colleges and the Regional Enterprise Council with representatives from the business, social enterprise and third sectors. The partnership is now in the fifth year of the delivery of the Edinburgh and South East Scotland City Region Deal programme, and we continue to make excellent progress.

Building on the successful delivery of the City Region Partners have developed an ambitious Regional Prosperity Framework (RPF) that articulates the next phase of activity to develop the regional economy, building upon the successes of the City Region Deal. The RPF sets out a blueprint for regional economic recovery post-pandemic; resilience through the cost-of-living crisis and transition to net zero.

Our RPF Delivery Plan is both an action plan – focused on more immediate interventions that can currently be resourced; and a prospectus – setting out collective future ambition and opportunities. A living document, the Delivery Plan sets out an ambitious and dynamic series of four key programmes to deliver the region's ambitions:

- Green Forth
- Infrastructure for Recovery
- Visitor Economy and Culture, and
- Data-driven Innovation Economy

These programmes will enable the city region to maintain and enhance its global reputation and become the data capital of Europe, delivering sustainable and inclusive growth.

Our Delivery plan aligns with Scotland's National Strategy for Economic Transformation (NSET), and UK Government's Levelling Up priorities.

We ask the Scottish and UK Governments to continue to commit to work in tripartite partnership to deliver our Blueprint through a long term, integrated, place-based funding allocation to deliver shared outcomes.

Chair of the Edinburgh & South East of Scotland Joint Committee



“ We only have this one planet; we got to figure out how to live on it without destroying it. ”
Tricia Helfer

Executive Summary

Over the last five years the regional economic partnership (REP) behind the South East Scotland City Region Deal has flourished, resulting in the publication of the Regional Prosperity Framework (RPF) in September 2021.

A range of acute external pressures have strained the REP, and this living Delivery Plan is our remedy. The Plan targets three goals: reduced economic exclusion; increased regional competitiveness; and, accelerated transition to Net Zero.

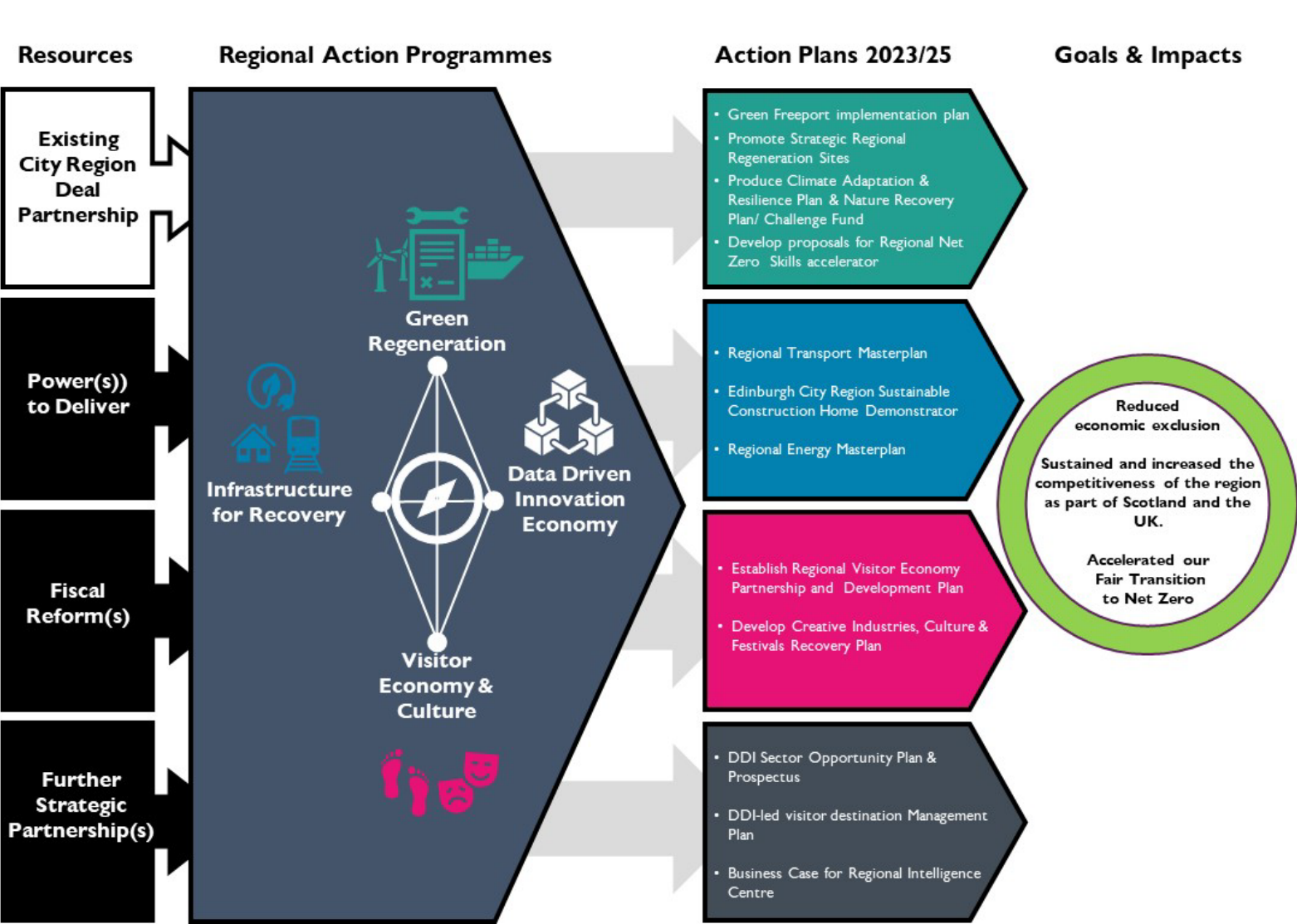
The Delivery Plan comprises four key programmes and associated regional action plans. The action plans will deliver immediate benefits whilst providing a longer-term platform for future activities that deliver our goals.

Early momentum is key to consolidating our REP and is core to our actions plans. Our Call to Action comprises four priority initiatives:

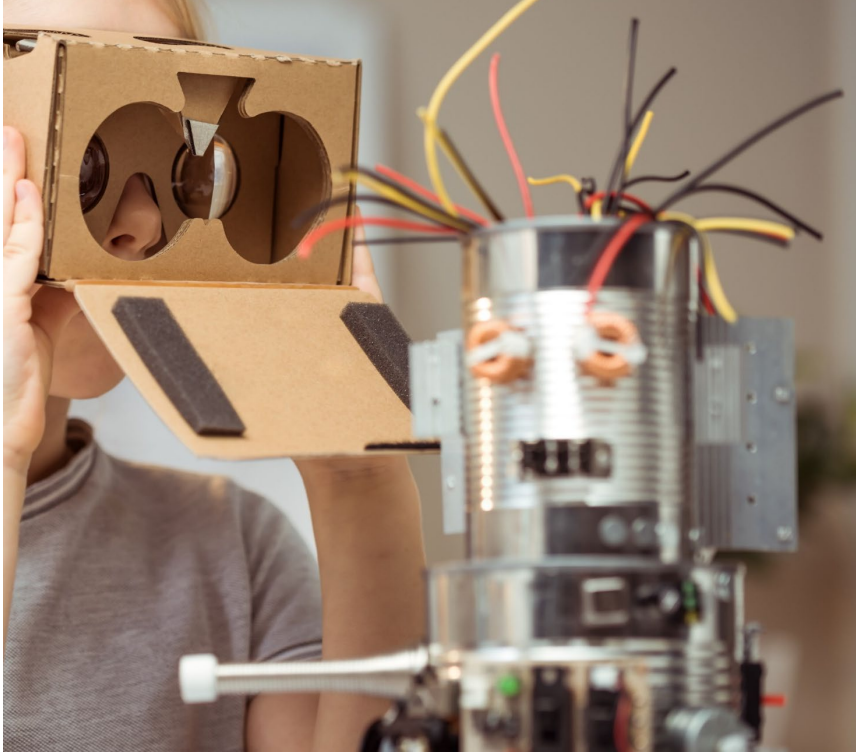
- Co-develop with Government a *place based capital and revenue funding model for delivery of regional ambitions*;
- Develop Green Forth investment prospectus;
- Secure a sustainable visitor economy and promotion of our cultural assets; and,
- Promote the transition to data enabled economy in the region.

These initiatives will provide further evidence of the positive impact of our REP; build further confidence in our ability to collaborate and deliver and demonstrate the positive outcomes that investment in our region will deliver.

The REP now seeks to co-create the delivery and resourcing approach for this Delivery Plan with government partners and other stakeholders.



A region that is committed to new ways of working to grow an innovative and diverse Economy



CodeBase fully supports Edinburgh's ambition to become the Data Capital of Europe. That is why we are excited about plans to embed, and broaden the impact of, Data-Driven Innovation investment in the regional and national economy.

In order to become Europe's Data Capital, it is essential that Edinburgh and South East Scotland continue to provide the skills, support network, data and transport infrastructure that will facilitate the continued growth of data-led organisations - companies old and new - in the region.. **Steven Drost, CSO CodeBase**

Introduction

Our Delivery Plan has been developed through our Regional Economic Partnership (REP) in collaboration with government and their agencies. The Plan sets out our opportunities for regional action and investment that better deliver regional inclusive economic growth through regional collaboration.

The Delivery Plan Builds Upon our shared Strategic Framework

The Regional Prosperity Framework (RPF) articulates the long-term aspirational goals for Edinburgh and South East Scotland city region. It guides the future direction of regional economic and wider policy by setting out an ambitious vision for the regional economy to 2041. All actions under the RPF are framed to support:

People: expand access fair work, learn and develop new skills and to live happy and healthy lives

Places: develop communities that are sustainable, attractive to live and work in and where enterprise thrives

Planet: meet our needs whilst enabling future generations to meet theirs, with a focus on climate action through emissions reduction and adaptation.

Our Vision for the Region is Challenging but Achievable...

We will ensure the social and economic benefits of future growth extend to all. All sections of the community will have the opportunity to develop & enhance the key skills that will help to end inequalities in our society. We will protect our environment and make best use of our extraordinary built and natural assets, ensuring that our Region delivers a just transition to a net zero economy. Our institutions, ancient and modern, will deliver positive outcomes that enhance our local, national, and international reputation. Our aim is to become the data capital of Europe.

...by Remaining Responsive to Change

Global events, such as global pandemic recovery, the war in Ukraine, inflation and emerging financial and political uncertainties, demand an agile strategic response if our shared regional ambitions are to be achieved. As a result, the Delivery Plan focuses on the immediate **1 to 3-year horizon**, but in the context of our longer-term regional ambitions. It will be **reviewed annually**, adding or subtracting Programmes and projects to ensure continued focus on our ambitions and enable dynamic responses to any challenges as they emerge.

Our Plan Builds Upon the Unique Attributes of the Region

The Delivery Plan describes:

- **The Region's Diverse Economy**, identifying the unique strengths and assets of our regional economy.
- **Opportunities and Challenges**, assessing our regional growth levers and the barriers we must overcome.
- **Delivering together**, describing the aims and priorities for our Plan including the pathway that we can follow if we are going to positively impact the regional economy.



A RESILIENT REGIONAL ECONOMY

Our Diverse Region

Edinburgh

- Key driver of Scottish economy with diverse global business base, quality retail core, and world heritage cityscape.
- Global strengths in professional services, finance, insurance, education, science, health and data.
- Thriving retail, hospitality and leisure sector.
- Forth Bridge world heritage site frames key green growth and regeneration opportunities along the Forth.
- Continued strong demand in housing and commercial property markets.
- Regional actions underway to distribute economic opportunity, address commuting travel patterns, improve affordable housing supply and enhance strategic local infrastructure.

West Lothian

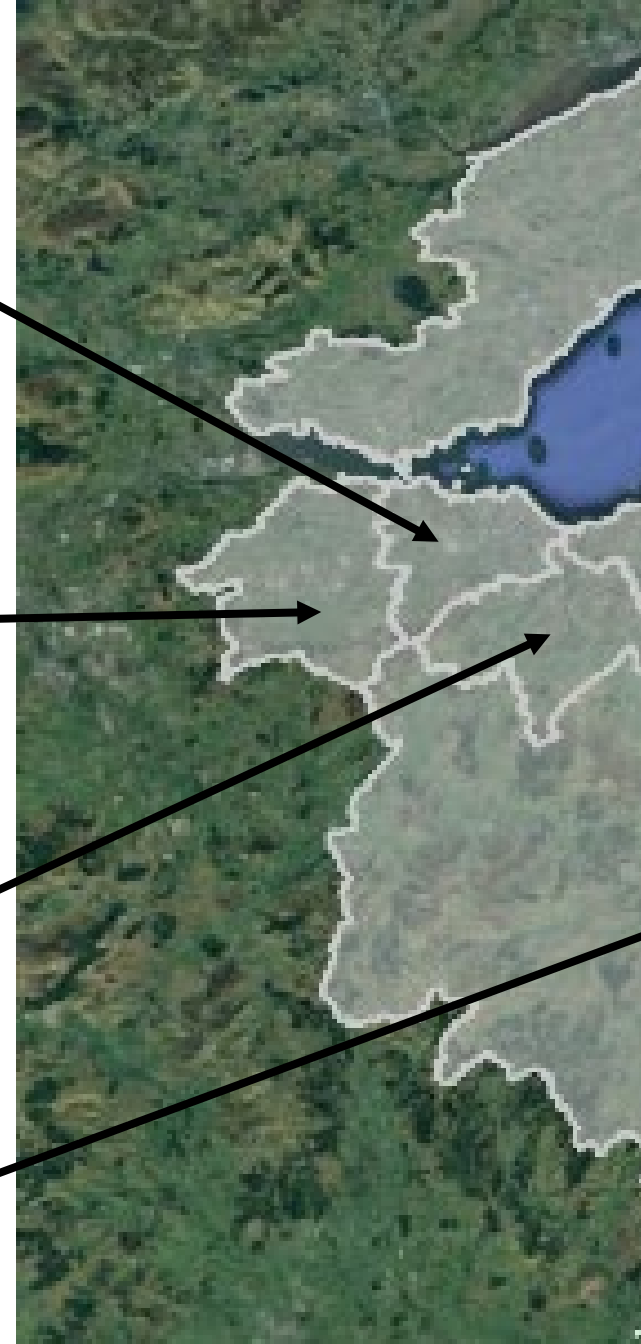
- Broad and extensive business base is supported by a skilled workforce
- Key strengths in life sciences, engineering, construction, food & drink, aerospace, retail, software development, renewables, advanced manufacturing, health, communications, support services and logistics.
- Heartlands offers 2,000 homes and 1.5 million square feet of employment space with easy motorway access.
- Winchburgh is delivering thousands of new homes and 40 acres of employment and retail space, with easy motorway access and potential for a new rail station.

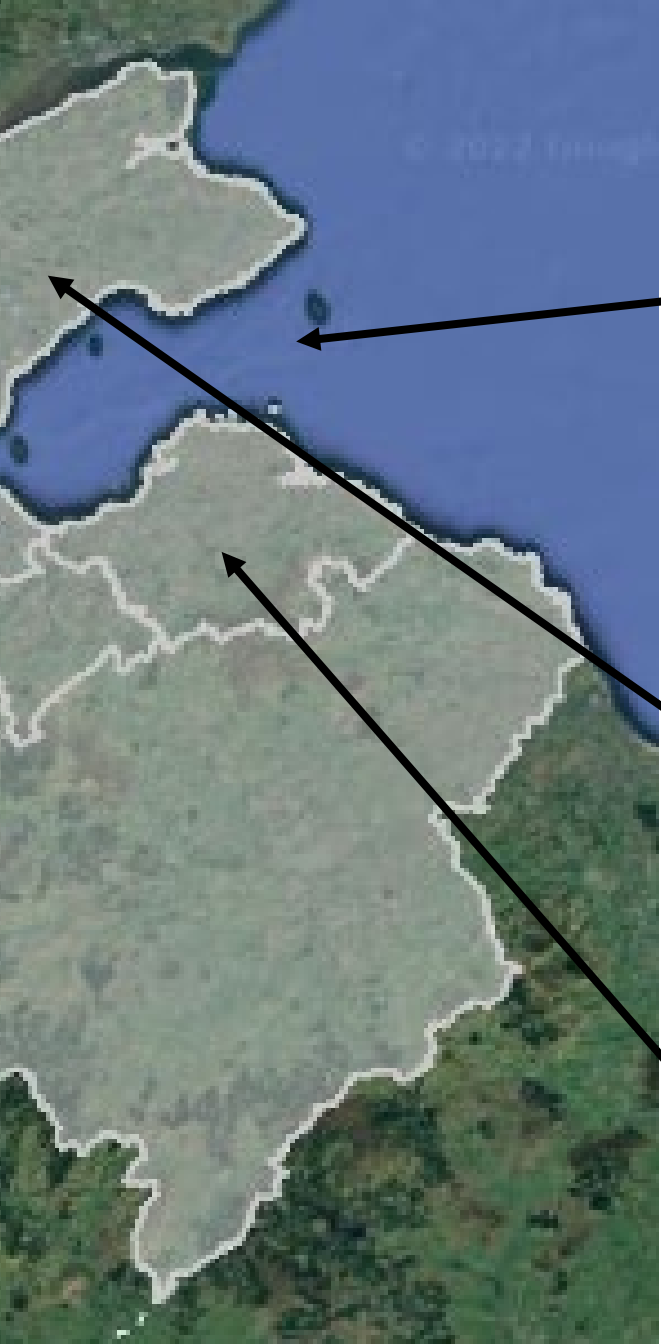
Midlothian

- High quality clusters of professional, education, health and scientific developments such as Easter Bush.
- At the forefront of world leading research and development programmes in biomedicine and agritech.
- Data Driven Innovation Skills Gateway established at Newbattle High School Centre of Excellence.
- Destination Hillend is a strategic proposal for multi-activity leisure tourism with business opportunities at Hillend Snowsports Centre.
- Strengths in wholesale retail and trade, construction and manufacturing, and agriculture.

Scottish Borders

- Strong cultural heritage, high quality environment and communities with a good quality of life.
- Strengths in agriculture, energy, tourism, food & drink, manufacturing, forestry and construction
- Well connected to Central Scotland and the Cities of the North of England.
- Borders Rail has catalysed regional opportunities.
- Future extension of railway to Carlisle and planned 4G/5G investments will sustain economic opportunities.
- Scottish Borders Mountain Bike Innovation Centre will cement the region's international cycling reputation.





The Firth of Forth

- Economic renaissance of the Forth estuary is driven by green growth, net zero energy innovation and sustainable infrastructure, new fuel production and nature based solutions.
- Strengths in life sciences, engineering, construction, agriculture, food and drink, distribution, aerospace, retail, software development and renewables, advanced manufacturing health, information, communications, support services and logistics.
- Three regeneration and renewal zones along its length:
 1. South Zone: Hound Point (deep water facilities), Edinburgh Waterfront and East Lothian's Climate Evolution Zone (including the former Cockenzie Power Station), Blindwells new settlement (with potential for expansion), and Eyemouth as a hub for off-shore renewables;
 2. North Zone: former Longannet Power Station site (with rail link), Rosyth International Port, Braefoot Bay Oil and Gas Terminal (deep water facilities), Mossmorran fuel and distribution hub, the Fife Renewables Innovation Centre and ORE Demonstrator at Levenmouth; and
 3. West Zone: the Forth provides links to the Falkirk and Grangemouth Investment Zone with its green fuel production, biotechnology and skills development, and Scotland's National Environment Centre and National Aquiculture Technology and Innovation Hub.

Fife

- Strengths include advanced manufacturing, financial and business services and food and drink.
- Outstanding coastline and strategic travel routes provide opportunities for inclusive, sustainable growth.
- Dunfermline awarded city status and offers large housing development area including shared learning campus for Fife College.
- Rosyth International Port and Arrol Gibb Campus complement local strengths in freight and logistics.
- Centre of Excellence in Low Carbon and Renewable Energy innovation being created at Guardbridge.
- number of transformative investments are already underway (e.g. reopening of the Levenmouth Rail Link).

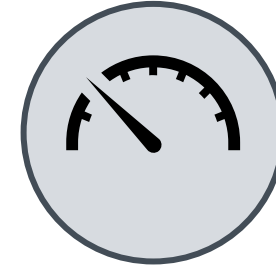
East Lothian

- Celebrated for its attractive market towns, prime countryside and coast, and golf and leisure tourism.
- Green growth opportunities in emerging **Climate Evolution Zone**, including **Cockenzie Power Station site** and potential expansion of **Blindwells new settlement**,
- Potential investments in strategic sustainable infrastructure, including the **High Speed Rail**,
- Internationally significant scientific, biomedical and education activities, including **Edinburgh Innovation Hub** and **Edinburgh Innovation Park**,
- The future use of Torness Nuclear Power Station site is a significant longer term opportunity.

Our Economy and Goals

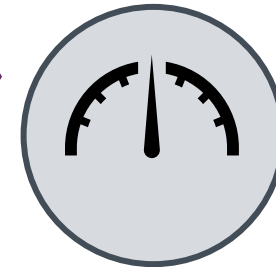
- **65%** of 1.4m residents are of working age. The Region's dependency ratio is projected to increase from **54%** in 2018 to **57%** by 2043, compared to Scotland's **60%**.
- This is the fastest growing region in Scotland and one of fastest in UK. Forecast change in population 2018 – 2043 is **9.1%** (Scotland **2.5%**/UK **9%**).
- In 2022, **20.7%** of residents aged 16-64 were economically inactive, **2.2%** lower than Scotland. This ranges from **16.3%** to **26.9%** in the Local Authorities. It is a decrease from pre-pandemic levels. Reasons for inactivity include long term sickness. Unemployment rates by disabled status range from **15.6%** to **33.7%**.
- By 2032, there will be a need to replace **264,100** people who have left the labour market in the Region. (RSA Nov 22)
- Productivity, calculated by dividing total regional GVA by total regional employment (measured by jobs), in 2022, was forecast to be **£59,700**, higher any other region and than the Scottish average of **£54,100**.
- Over the long-term (2025-2032) productivity is expected to grow by **1.1%** on average each year, broadly similar to Scotland as a whole.
- **4.4** tonnes of CO2 emissions per head in 2020.

Our Goals



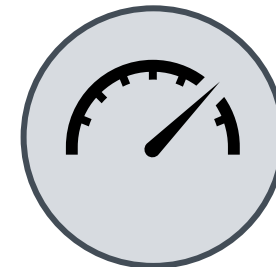
Reduce Economic Exclusion

- Reduce levels of economically inactivity.
- Reduce unemployment levels by disabled status.
- Reduce the number of people suffering the greatest levels of deprivation
- Minimise the impact of an increasing dependency ratio in the region



Sustained and Increased Competitiveness

- Increase productivity per capita by increasing adoption of data driven innovation and business start-ups.



Accelerate Fair Transition to Net Zero

- Reduce per capita end-user greenhouse gas emissions for the region and by sector
- Better achieve net zero by 2045, 90% by 2040 and 75% by 2030.

Opportunities & Challenges

Opportunities

Devise circular investment opportunities where benefits from investments are retained and magnified within the region.

Link supply and demand at a regional level so that regional needs can be better met locally in a sustainable fashion.

Develop a “*pack mentality*” in the REP to seek and deliver regional opportunities which transects all sectors and builds on the success of the City Region Deal.

Building on the progress in the digitisation of the regional economy, further drive adoption of this innovation into all sectors

Improve food and resource security at a regional level, and develop sustainable forms of tourism, culture and heritage

Deliver interventions that are collaborative, multi-faceted and diffused to address local needs across the region

Embed community wealth building in anchor institutions to increase focus on a wellbeing economy

Develop new partnerships with industry and government and secure funding through a “one region” approach that complements local action within communities

Mobilise a whole societal ‘one region’ approach to Net Zero, involving communities, businesses and governments

Goals

Sustained and Increased Competitiveness

Reduced Economic Exclusion

Accelerated Fair Transition to Net Zero

Challenges

Place based capital and revenue funding allocations, recognising the delivery of regional ambition, need to be designed and delivered

Significant fiscal uncertainty exists for government and the public sector. Maintaining core key services is the priority for all regional partners in the short term

The scale and complexity of our external challenges requires a response that is equal to it, and **collective action at scale is vital** to meet them with the necessary capability and capacity

Change in national policies and approaches is needed if regional opportunities are to be realised

Quality of life shocks are having a real and sustained impact on the quality of life across the region, reinforcing regional inequalities

Whilst unprecedented transformative change is essential the cost of delivering a **just transition**, in the short term, is beyond the means of local government



OUR ACTION PLAN PRIORITIES

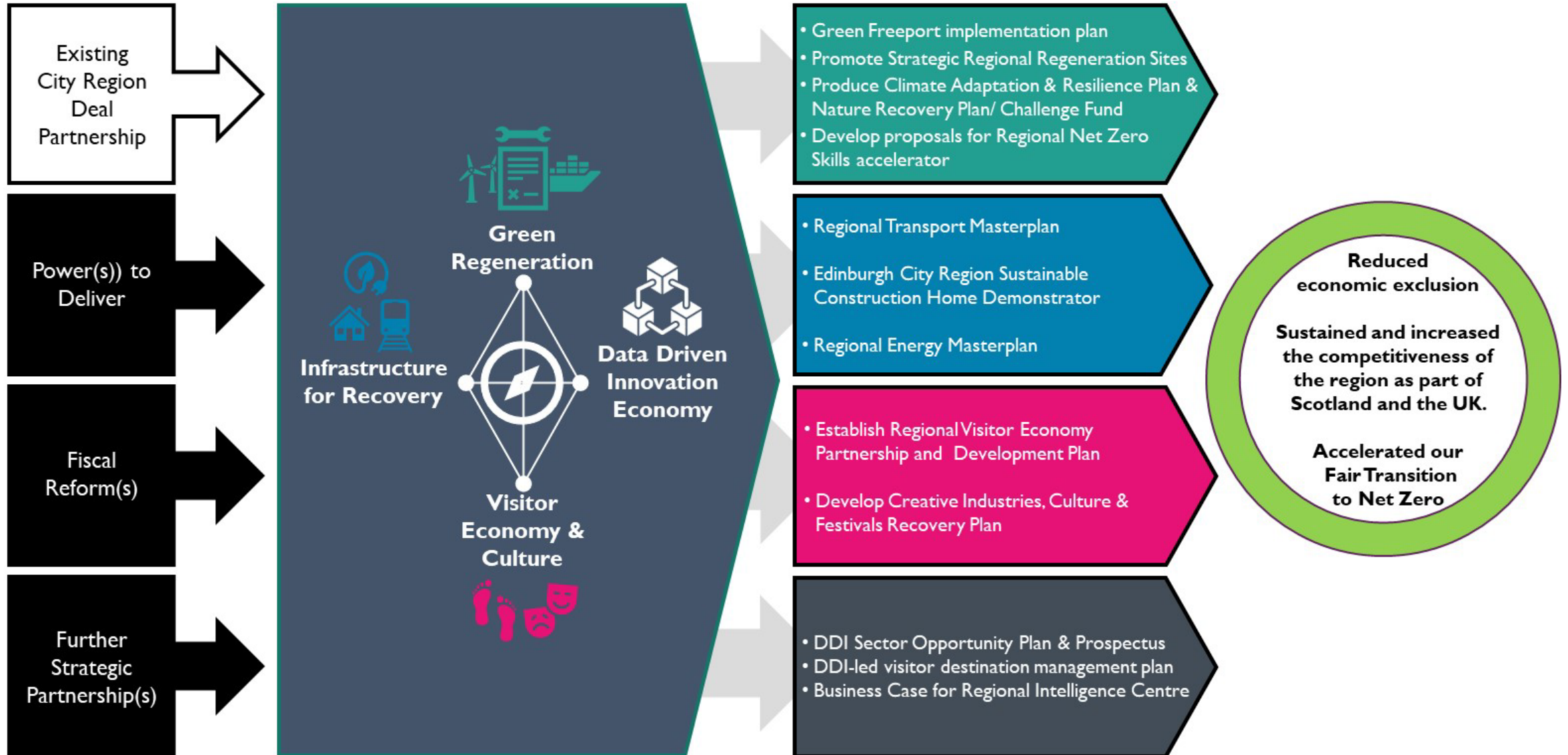
2023 - 2025

Resources

Regional Action Programmes

Action Plans 2023/25

Goals & Impacts



Green Regeneration



- **Await decision on Forth Green Freeport Bid & Cockenzie Power Station Site Levelling Up Bid:**
 - *Develop, define and deliver business cases for longer term projects and programmes*
- **Establish Forth Collaboration Network to oversee successful Forth transformation, including ambition to deliver:**
 - *Leith Renewables Hub and wider Edinburgh Waterfront*
 - *Climate Evolution Zone with net zero infrastructure and employment at former Cockenzie Power Station site (with rail link) and Blindwells New Settlement (with potential for expansion), as well as Eyemouth off-shore renewables service and operations hub, and in the longer term future opportunities at Torness Nuclear Power Station site*
 - *Rosyth International Port, including Green & Blue Innovation Economy Opportunities, reuse of former Longannet Power Station site (with rail link), and Fife Renewables Innovation Centre and ORE Demonstrator at Levenmouth;*
- **Define and Develop a Regional Climate Adaptation & Resilience Plan:**
 - *Build on Adaptation Scotland's Regional Climate Risk Assessment to develop a regional adaptation and mitigation strategy*
- **Establish Nature Recovery Plan and Project Fund:**
 - *Use regional and local plans and strategies, including coastal management programmes and practices, and project planning to define and deliver cross border Other Area Based Conservation Measures and net benefits for biodiversity, linked to potential developer contribution protocols*
- **Regional Net Zero Accelerator:**
 - *Finalise Business Case for Regional Net Zero Skills Accelerator Hub to deliver programmes that enable key sectors to accelerate transition to net zero by meeting demand for green skills*

Infrastructure for Recovery



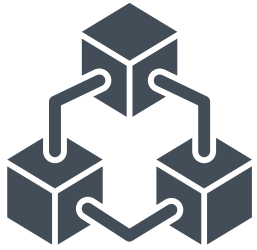
- **Regional Transport Masterplan**
 - *Collaboratively develop a brief for the South East Scotland Regional Transport Masterplan, Funding & Delivery Programme.*
- **Edinburgh City Region Sustainable Construction Home Demonstrator**
 - *Phase 1 in delivery and scale up programme with Regional Pipeline defined*
 - *Identify funding and delivery partner and potentially suitable sites for off-site manufacturing facilities – e.g. for infrastructure and / or housing*
- **Regional Energy Masterplan**
 - *Phase 1 funding secured and develop Phase 2 proposition and demonstrators*

Visitor Economy & Culture

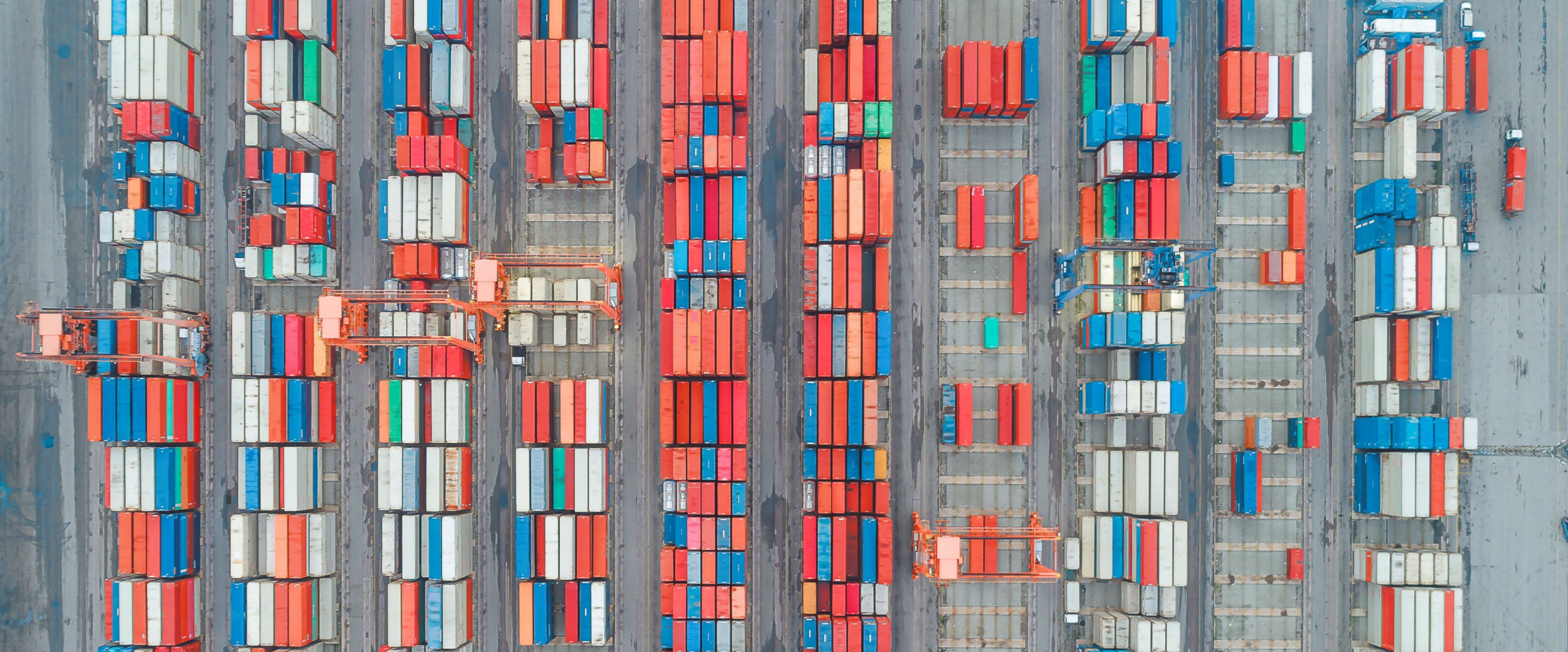


- **Regional Visitor Economy Partnership:**
 - *Seek to establish Regional Partnership with Visit Scotland, Scottish Enterprise and others*
- **Regional Visitor Economy Development Plan:**
 - *Regional Partnership to co-produce a Plan that aligns regional ambitions and actions*
- **Festivals Recovery:**
 - *Create Festivals recovery fund to create resilience, and to enable festivals to recover with new business model implemented*
- **Creative Industries:**
 - *Define regional creative industries sectoral challenges and opportunities, and co-produce a recovery and growth plan*

Data Driven Innovation



- **DDI Prospectus Sector Opportunity Plan:**
 - *Develop new regional and sectoral plans and prospectus to align the role and impact of data services across the business base and region, focusing on sectorial priorities*
- **DDI-led approach to visitor economy destination management:**
 - *Scope business case, which will help to position the region as a global leader in regional data-driven decision-making for strategic tourism investments*
- **Regional Intelligence Centre:**
 - *Finalise business case to enable regional policy makers, service delivery executives and the public to access relevant useful knowledge and insights to develop regional policy and improve services*



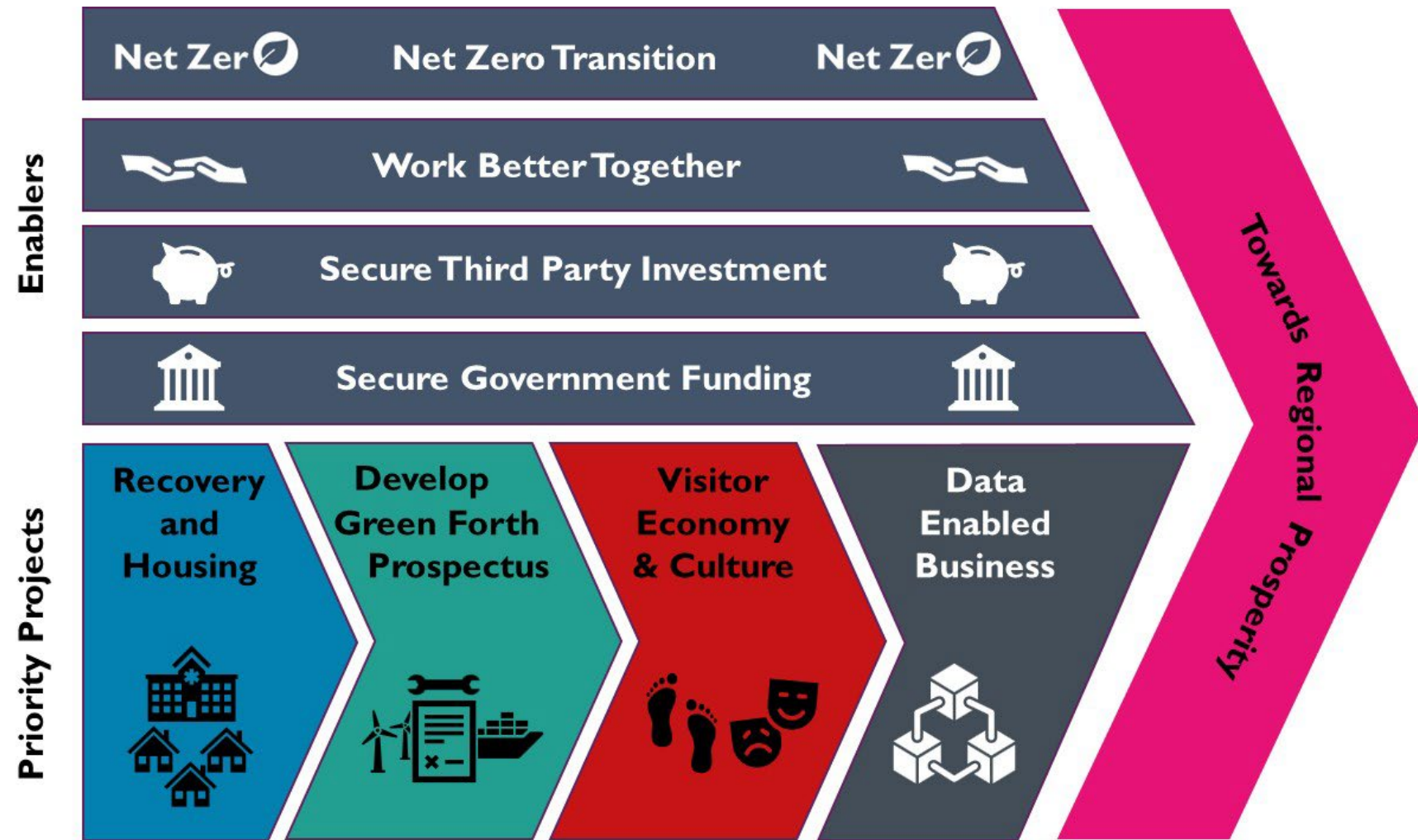
**OUR SHARED PROSPECTUS:
DELIVERING TOGETHER**

A Call to Action

Early momentum is key to any major initiative and is embedded in the Action Plan. Our Call to Action does not require all 15 initiatives to be launched simultaneously and immediately. Instead, we will undertake the following four activities as a priority:

- Co-develop with Government a new funding model for regional initiatives that incorporates capital and revenue place based funding allocations
- Develop an investment prospectus for the Green Forth.
- Secure a sustainable visitor economy and promotion of our cultural assets.
- Promote the transition to data enabled business performance in the region.

These early wins will provide us with further evidence of the positive impact of regional working; build further confidence in our ability to collaborate and deliver and demonstrate the positive outcomes that investment in our region will deliver.



Our Ask of Government

Transformation is a Team activity

Addressing the scale of transformation required to transition the region to a balanced economy that meets the needs of its citizens and businesses within the limits of its resources will require action at a local, regional and national level. It is for this reason that the Partners have set out an ambitious yet pragmatic vision for innovation and change. New ways of working together are required.

The region has the diversity and attributes to tackle many of its economic challenges in ways that provide for the needs of its citizens and businesses. But the nature of some of the actions required mean that **a new multi-governmental Team approach is required.**

Many of the controls through which local and regional challenges can be addressed sit with others at Scottish or UK Government level. Through the right form of partnership (new collaborative approaches and funding models) the Edinburgh and South East Scotland Region has the potential to harness the opportunity of the drive to net zero, to build a more self-sustaining regional economy that can support a just transition for Scotland and the UK.

Our Asks of Government Span Financial Support and New Forms of Partnering

To realise the aim and objectives of the Regional Prosperity Framework, and this associated Action Plan, Scottish and UK Government are asked to offer the following support:

Financial Support for Programmes

- We ask for our Action Plan to be achieved through a **medium to long term, integrated, place-based funding allocation** based on shared outcomes.

New forms of Partnering

- Support to **develop a new Regional delivery capability** to support the Regional Prosperity Framework
- Align national strategies & policies to **support regional aspirations**
- We ask both the Scottish and UK Governments to **commit to continue to work in tripartite (UKG/SG/ESES) partnership.**
- Recognise the region is closely aligned and uniquely positioned to progress the recommendations made in the Scottish Government's Regional Economic Policy Review.

Enablement

New powers and new delivery tools to deliver the Framework, through a “live” Action Plans.

National Strength Recognition – there are a basket of regional economic assets that are a vital part of the national economy, but which have been buffeted by recent economic upheavals. We want to work the Governments to secure these for the long term.



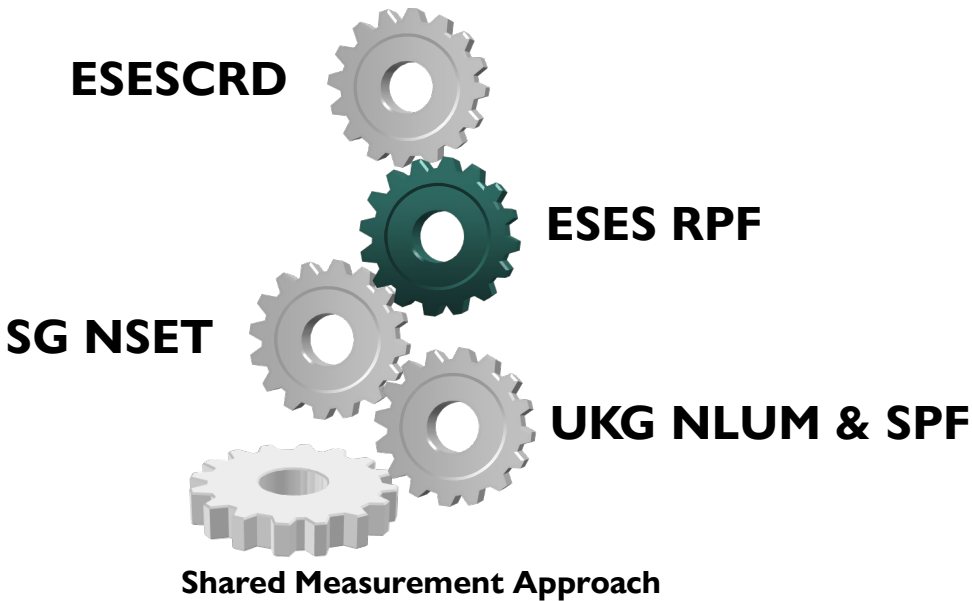
What Will Change?

Measuring impact

As with the City Region Deal activity, it is intended that a Benefit Realisation approach be adopted for the Regional Prosperity Framework.

Given the emerging activities of the Scottish Government, and its National Strategy for Economic Transformation, and the Regional dimension to this being developed, and UK Government, through its Levelling Up Missions and Shared Prosperity Fund activity, the Regional Partners want to work with both UK and Scottish Government, and other Regional Partners, to develop a Benefit Realisation approach that enables all of these activities to be answered with the lowest possible resource demand, ensuring that resources are primarily focused on delivery and impact.

This will look at build up on the work already defined through the City Region Deal, to create a sustained suite of indicators of success and impact, supported by the stories of impact that allow economic development to be understood, allowing the stories of our citizens and businesses to be heard and amplified.



It has been a pleasure for the Regional Enterprise Council (REC) to have been part of developing the Regional Prosperity Framework (RPF), from its original vision through to this Delivery Plan. The REC advises the City Region Deal's Joint Committee on the delivery of projects across the city region and encourages further investment opportunities, and has helped shape the ambition and strategic direction of the RPF.

There has been considerable change at a national, local and regional level since the RPF was published in September 2021. The City Region Deal Partners are determined to respond positively to challenges and changes in the economy. It is critically important that the RPF Delivery Plan is a living document that is regularly reviewed and re-focussed to ensure that everyone benefits from regional prosperity and growth.

The four key programmes - Green Forth; Housing and Recovery; Culture & Visitor Economy; and Data Enabled Business - are critical to the region's economic future. They provide clarity for collaboration and future investment to ensure this region continues to be Scotland's most successful and productive regional economy. The RPF Delivery Plan is a key step in delivering sustainable, inclusive growth to enhance and protect our environment and make best use of the region's built and natural assets, ensuring that the region delivers a just transition to a net zero economy.

Claire Pattullo and Gary Clark, Chair and Vice Chair of the Regional Enterprise Council

It has been a privilege to have been part of the team preparing the Regional Prosperity Framework to constitute a flexible and lasting template for economic development across the whole Region and to maximise the benefits for all from the Edinburgh and South East Scotland City Deal.

A most welcome characteristic of how that team has worked together is the collaboration across geographies among the elected representatives from all political parties, council officials, communities and enterprises. As we have sought to build back differently for the future many open conversations have taken place about where we are now, where we want to be, and how we are going to get there. These conversations have been conducted, not as a dance of opposites, fueled by self-interest or point-scoring, but as heartfelt dialogues to collectively create and deliver a common vision for the future.

The team have had the confidence to be bold and ambitious in how the pressing challenges that exist for our enterprises, workplaces, marketplaces, communities and for our environment can be addressed. We have had a shared vision of a sustainable, respectful Scotland, where individuals and communities can flourish, and our diversity is celebrated. That vision recognises that our wellbeing is dependent upon the people most affected taking informed decisions about their futures.

As the Framework process now moves from design the team is wrestling with how the pace of delivery can be accelerated. As the actions and outputs are measured, we will answer the timeless question posed by immunologist Jonas Salk, who developed the polio vaccine in the 1950s: are we being good ancestors?

Robert Carr, Regional Enterprise Council, Partner and Solicitor Advocate - Anderson Strathern



CITY REGION DEAL

Edinburgh & South East Scotland

Regional Prosperity Framework: 2023/24 Delivery Plan

This is a 'living document' and will be updated on an annual basis to reflect the delivery of activities to ensure that the Region meets its long term goals of a regional economy that is **resilient, flourishing** and **innovative**.



Copyright © 2022 - Edinburgh and South East Scotland City Region Deal



ANNEX 1: CASE STUDIES ON EXISTING REGIONAL COLLABORATION

Case Studies

Case Study: Borders Railway

When opened in September 2015, the Borders Railway marked the longest domestic railway to be constructed in Britain for over 100 years. The new railway quickly and substantially exceeded the predicted patronage figures and wider benefit forecasts.

The line has breathed fresh vitality and investment into the communities it serves, transforming the places and local economies by:

- Retaining and attracting residents;
- Enabling the local business base to expand; and
- Doing so in a sustainable manner.

There is a commitment in the Borderland Growth Deal for UK and Scottish Governments to fund a Feasibility Study to deliver the remaining section to Carlisle, providing an important regional and national connection southwards to the rest of the UK.



Source: Borders Railway Completion The missing link - re-connecting the Borderlands – Produced by Borderland Inclusive Growth Deal

Transport Scotland evaluation of the existing line has revealed the wide-ranging nature of the impacts in just the first two years of operation (since 2015/16). Only two years of data is likely to vastly underreport the full impacts - major rail infrastructure would typically take five to ten years for the full effects. Impact summary below:

Connectivity

- 40% of journeys we not previously made
- In only two years, 15% of survey respondents indicating they had changed employment, and over half indicating that the line was a factor
- 90%+ of travel is to/from Edinburgh and beyond
- 15% of users did not have a car available

Modal Shift

- 60% used another mode, of which 64% previously travelled by car
- 6% of survey respondents had reduced their car ownership

Housing

- Housing delivery in Midlothian doubled in years before opening
- Over 50% of new residents stated the line had been a factor in their decision to move to the area

Visitor Economy

- Visitor numbers for Midlothian and Borders attractions increased by 7% in the first half of 2016
- 70% of tourist and day visitor users said the railway had been a factor in their decision to make the trip

Skills/Qualifications/Training

- Applications to Borders College (Galashiels) increased by 74% in 2016/17 compared to the previous year.

Approach: Partnership

Themes: Innovative – Flourishing & Resilient

Benefits: Net Zero, jobs, connectivity, housing, skills

Case Studies

Case Study: Preparing for Tomorrow Today – Granton Net Zero Housing

As part of the Region's commitment to “net-zero” 75 net-zero carbon homes and three retail units have been developed as part of the Granton D1 initiative.

This is an Edinburgh Home Demonstrator (EHD) pilot, championed by City Region partner, the City of Edinburgh Council, with support from construction and academic partners. It is part of the region's ambitions to deliver XXXX affordable homes by 2028.

The project was undertaken in partnership with CCG (Scotland) Ltd, to test this new business model for building affordable, net zero homes. A large proportion of the construction was carried out off-site in a factory setting, reducing the overall time it takes to build the homes.

The homes include zero emissions heating, reducing the risk of fuel poverty for tenants. In addition, this will help reduce their greenhouse [gas](#) emissions and support the region's net-zero targets.

The pilot is also supported by a team from Napier Edinburgh University, who are analysing the energy performance of the homes to validate and inform the net-zero carbon strategy for future EHD projects. The EHD project aims to deliver 1000 affordable net-zero carbon homes across the region as part of the City Region Deal.



Approach: Partnership
Themes: Innovative – Resilient
Benefits: Net Zero, homes, jobs, model for other developments

Case Studies

Case Study: Integrated Regional Employability & Skills (IRES)

IRES is a £25m, 8 year change programme which started in April 2018. Excellent progress is being made towards delivering an additional 14,700 skill improvements; 5,300 people into employment; and a further 500 career enhancements through its 7 themes:



Workforce Mobility (WFM)



Data-Driven Innovation (DDI) Skills Gateway



Housing Construction and Infrastructure (HCI) Skills Gateway



Integrated Knowledge Management Systems (IKS)



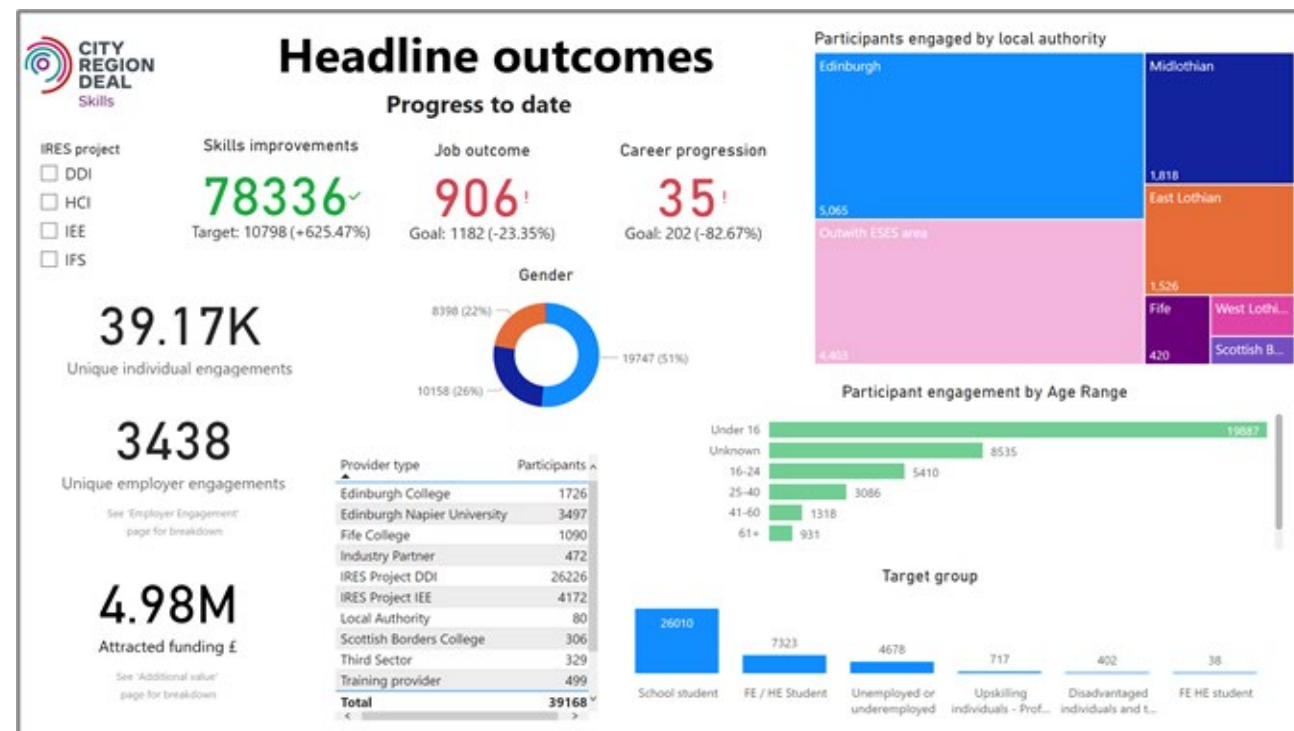
Intensive family support service (IFSS)



Labour Market Analysis and Evaluation (LMAE)



Integrated Employer Engagement (IEE)



Building on the successful partnerships established through the IRES programme we will support the Regional Prosperity Framework through the establishment of additional Skills Gateways. A Net Zero Accelerator to develop skills linked to green economy jobs including Construction, Energy and Transport; whilst there is a strong ambition for a Health and Social Care Skills Gateway to support innovation and capacity.

Outputs and outcomes are tracked through a bespoke monitoring and evaluation framework and reported using a live dashboard

Approach: Partnership
Themes: Resilient – Aligning Skills
Benefits: Skills, Jobs, Poverty Reduction

Case Studies

Case Study: Regional Transport Master Plan

Transport is a key enabler to unlock the region's potential, but in many areas, it has constrained the full realisation of opportunities and benefits for our people, place and economy. The national commitment to decarbonised transport and infrastructure provides a once in a generational opportunity to deliver a 'Just Transition' to tackle transport poverty and the inequalities that currently exist across the region. Coupled with the publication of the Regional Transport Strategy, Strategic Transport Projects Review 2 and the National Planning Framework 4, it all supports an 'infrastructure first' approach to deliver a sustainably connected region.

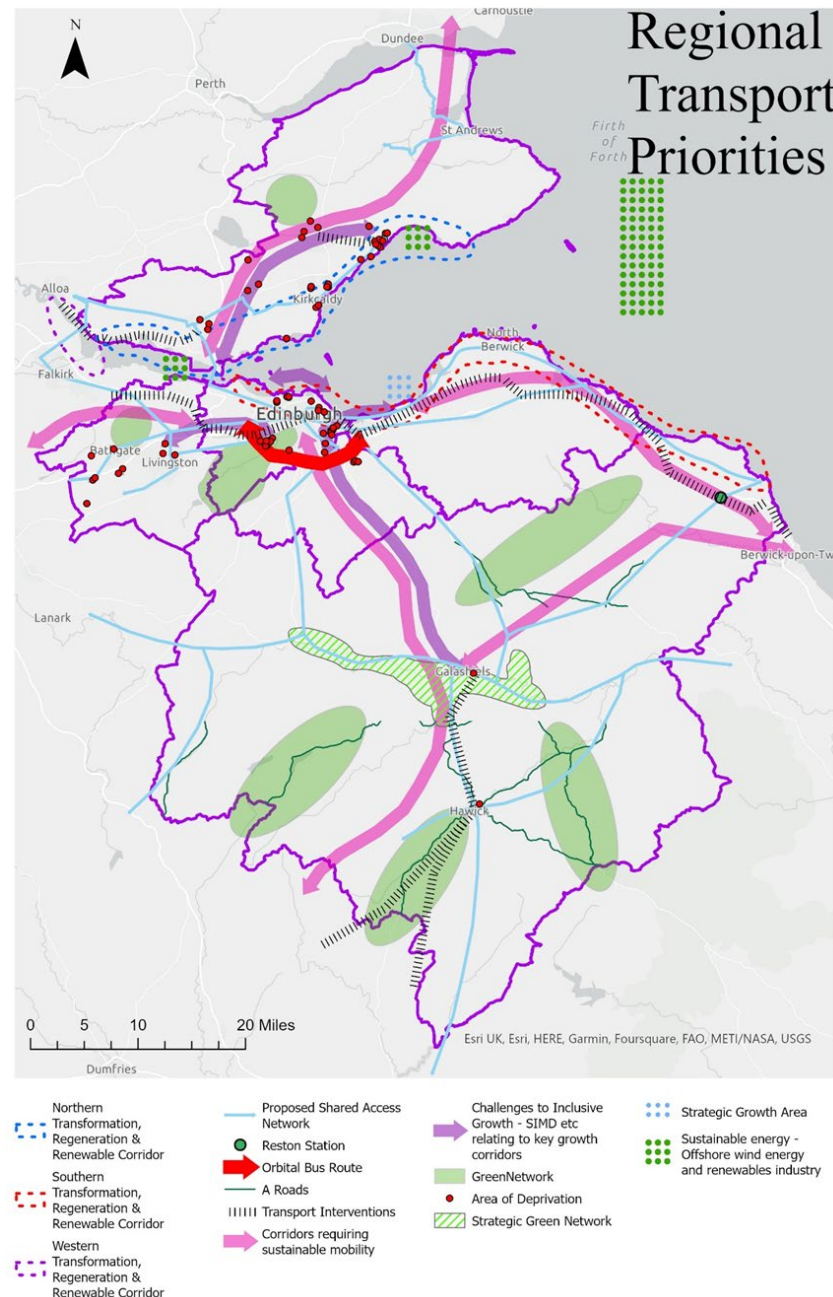
Our previous approach to public transport no longer responds to our region's needs and barriers. Instead, having a transport system which is collaborative, coordinated, collects/analyses/responds to the emerging data, is inclusive and responsive, attracts a diverse workforce, while minimising its impact on the environment is critical to the region's success.

A regional Master Plan will respond to the needs of the region by identifying the cross-boundary opportunities that will fill the gaps of SPTR2, identify economies of scale, build on existing partnerships to support the region's ambition and respond to current and future challenges.

Approach: Partnership

Themes: Innovative, Flourishing & Resilient

Benefits: Net Zero, jobs, connectivity, enabling the RPF 4 Priority Projects



As an example of this is Mass Rapid Transit (MRT). It must be designed with regional coordination, smarter (utilising data) and be responsive to accommodate high volumes of movement to key local and regional destinations, while acknowledge the variances in daily demand for a flexible working population. Regional MRT will include:

- Tram;
- Light / heavy rail (existing and new);
- Bus; and
- Active travel to deliver integration into wider local transport networks (whole journey approach – first mile/last mile).

Key to its success will be the equitable delivery of scaled journey hubs, targeted local/regional infrastructure improvements, a single Mobility as a Service information and ticketing system, open API's across all transport modes to optimise the network and experience for the end user

This will also support the expectations and demands of the visitors to our region, whether they are local, national or international. Assisting the role of the visitor arrival hubs like Edinburgh Airport, as a crucial access point for national and international visitors, before they seek coordinated sustainable transport options to visit the wider region and Scotland.

Master Plan Priorities:

- Partnership;
- Mobility as a Service;
- Data sharing and digital infrastructure aligned to transport network;
- Public transport infrastructure and services investment and funding models;
- Improve arterial routes into rural communities;
- Active Travel;
- Efficient movement of freight;
- Behavioral Change; and
- Decarbonising Transport.

Case Studies

Case Study: Place, People and Planet

Draft Example



Edinburgh Innovation Hub & Park

- Joint venture between East Lothian Council and Queen Margaret University to deliver the Edinburgh Innovation Hub
- Is funded by UK Government, the Scottish Government, and the Council
- The Hub will drive company growth, support and develop existing businesses and create sustainable new businesses to access a global market for healthy and functional food
- Will be a catalyst for subsequent delivery of wider Edinburgh Innovation Park (EIP)
- The EIP will create a nationally significant centre of knowledge exchange, innovation and high value businesses

East Lothian's Climate Evolution Zone

As part of the wider greening of the Forth, strategic net zero and just transition opportunities in this Zone include:

- the redevelopment of the Cockenzie Power Station site for net zero infrastructure and strategic employment
- Blindwells new settlement, with potential for expansion into a significant new town
- Sustainable infrastructure, including strategic transport improvements, potential for high speed rail, and green and blue network and nature based solutions

These major green growth projects can also be a catalyst for significant regeneration, and require partnership to enable and accelerate benefits.

Future of Torness Power Station Site

The future reuse of Torness Power Station site, with its grid connection, coastal location and deep water access, is a significant long term opportunity linked to the wider greening of the Forth. Strategic collaboration and partnership on the future use of this site and wider area could deliver long term benefits.

Approach: Partnership

Themes: Flourishing – Innovative – Resilient

Benefits: Green growth and jobs, and biomedical, net zero and just transition innovation, housing delivery, including affordable homes, strategic and sustainable infrastructure, regeneration and place-making,